

CERTIFICATE OF LOCATION OF GOVERNMENT CORNER

County of Anoka

State of Minnesota

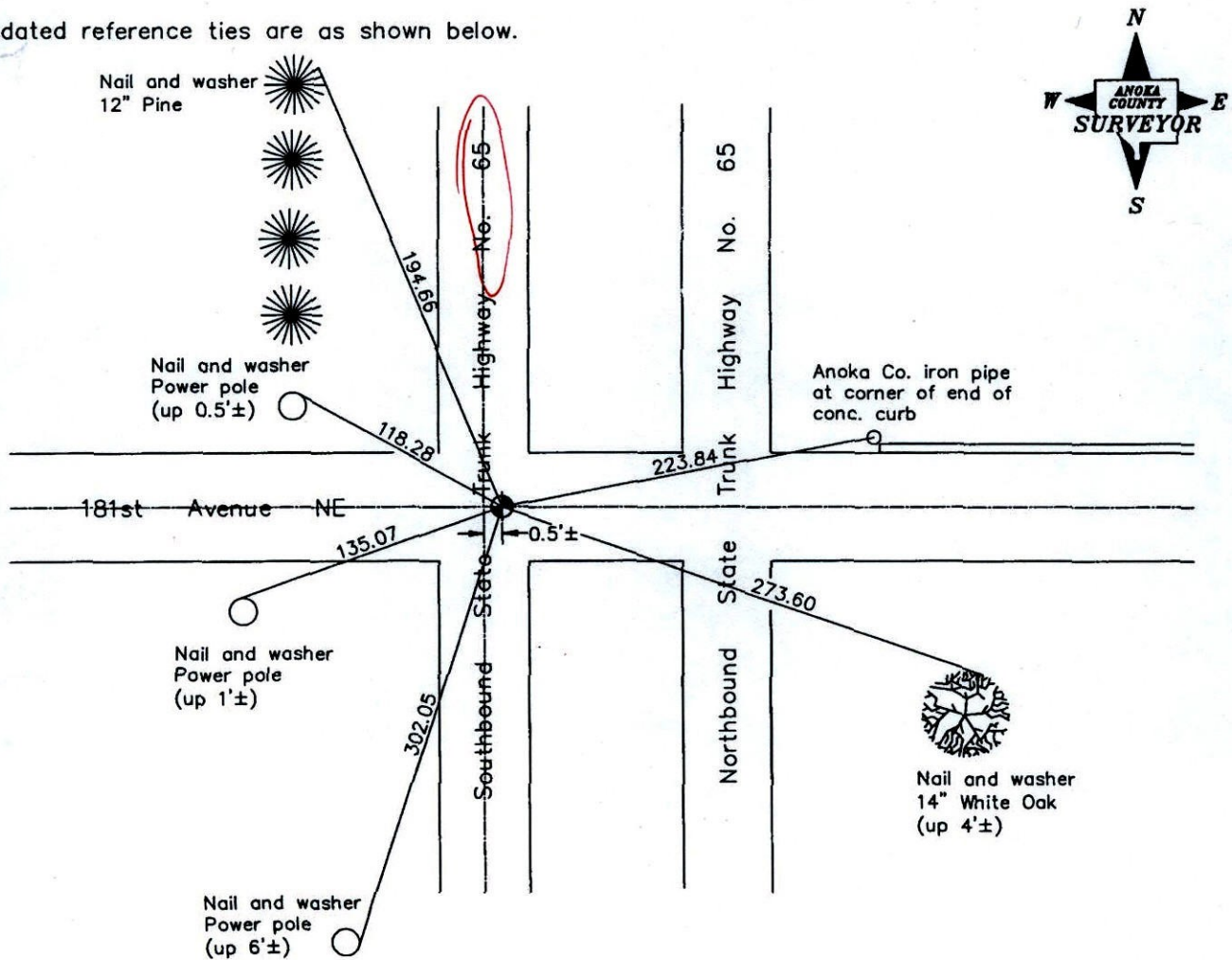
North 1/4 Corner of Sec. 5 Township 32 Range 23

On the 4th day of September, 1969, the described corner was evidenced by a granite monument

and to perpetuate the location of said corner, at the exact location thereof, a permanent marker was placed consisting of a cast iron monument

AND on the 15th day of September, 2006, said permanent marker was found broken and replaced with a cast iron monument

Updated reference ties are as shown below.



Revised date
10/24/90
12/31/90
Reset 9/15/06

N.A.D. 1983 Coordinates (1996 Adjustment)	
County Project Coordinates	
Northing	195810.0084
Easting	508332.8863
Date	9/15/06

I hereby certify that this United States public land survey monument record is correct and complete to the best of my knowledge and belief.

Larry D. Hoium Date 6/26/07

Larry D. Hoium, Anoka County Surveyor

Minnesota License Number 18165

CERTIFICATE OF LOCATION OF GOVERNMENT CORNER

County of Anoka

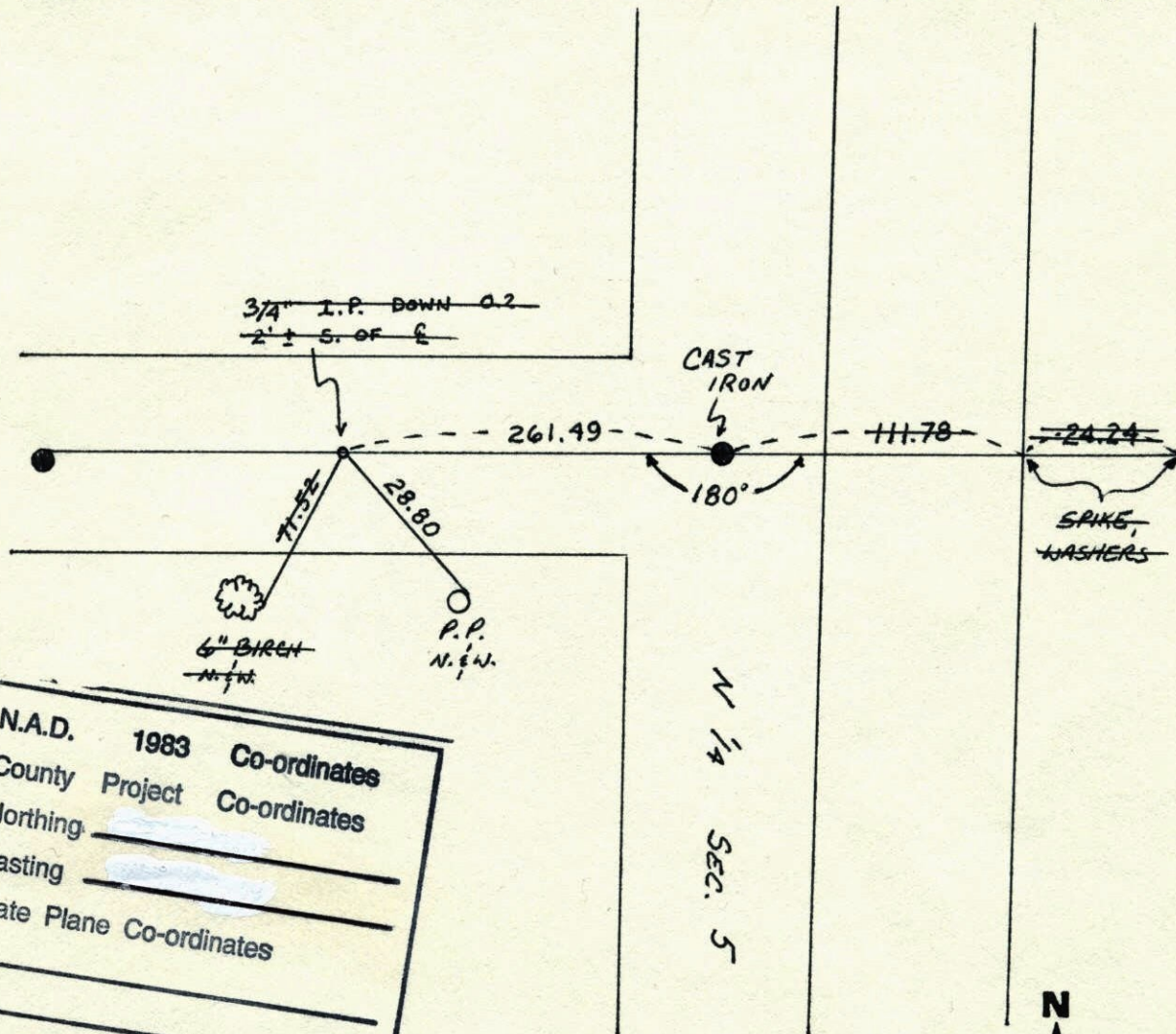
State of Minnesota

NORTH QTR. Corner of Sec. 5 Township 32 Range 23

I hereby certify that on the 4 day of SEPT., 1969, I found the described corner which was evidenced by GRANITE MON.

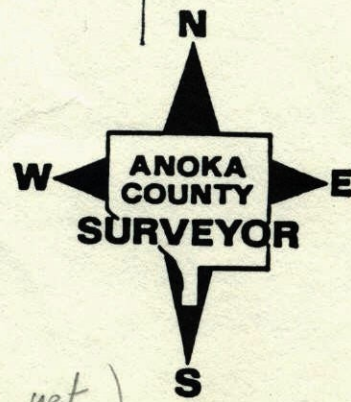
and I further certify that to perpetuate the location of said corner, I did, at the exact location thereof, place a permanent marker consisting of CAST IRON MON.
UNDER RLTP.

which reference or witness monuments are located in the manner following:



N.A.D.	1983	Co-ordinates
County	Project	Co-ordinates
Northing	_____	
Easting	_____	
State Plane Co-ordinates	_____	
Y	_____	
X	_____	

Date	Revised date	Revised date	Revised date
	12-31-90		
	10-24-90		



(Not shot yet)
4-05-02

CERTIFICATE OF LOCATION OF GOVERNMENT CORNER

County of Anoka

State of Minnesota

North 1/4 Corner of Sec. 5 Township 32 Range 23

I hereby certify that on the 4th day of September, 1969, I found the described corner which was evidenced by a granite monument

and I further certify that to perpetuate the location of said corner, I did, at the exact location thereof, place a permanent marker consisting of a cast iron monument under the blacktop

which reference or witness monuments are located in the manner following:

N.A.D. 1983 Co-ordinates

County Project Co-ordinates

Northing 195810.0084

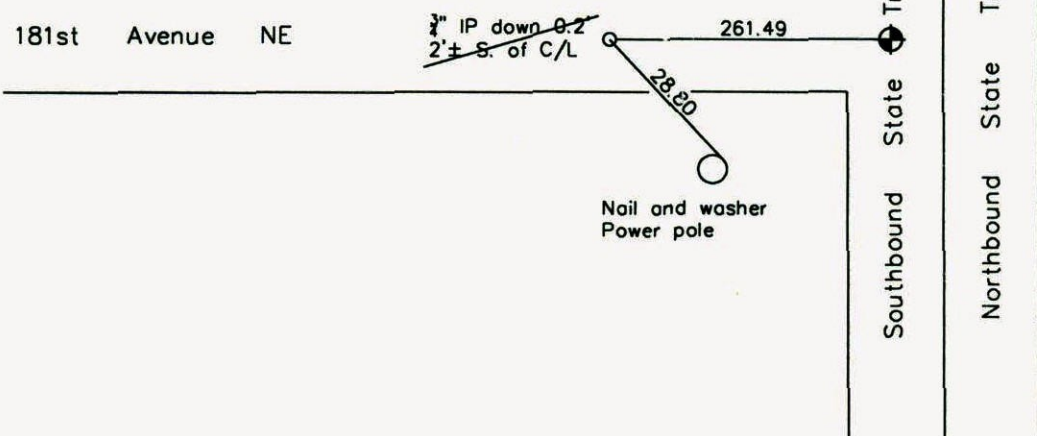
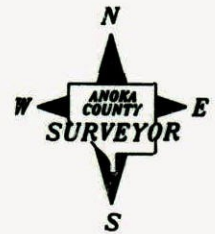
Easting 508332.8863

State Plane Co-ordinates

Y _____

X _____

Date _____



Revised date

10/24/90
12/31/90

N.A.D. 1983 Coordinates
(1996 adjustment)

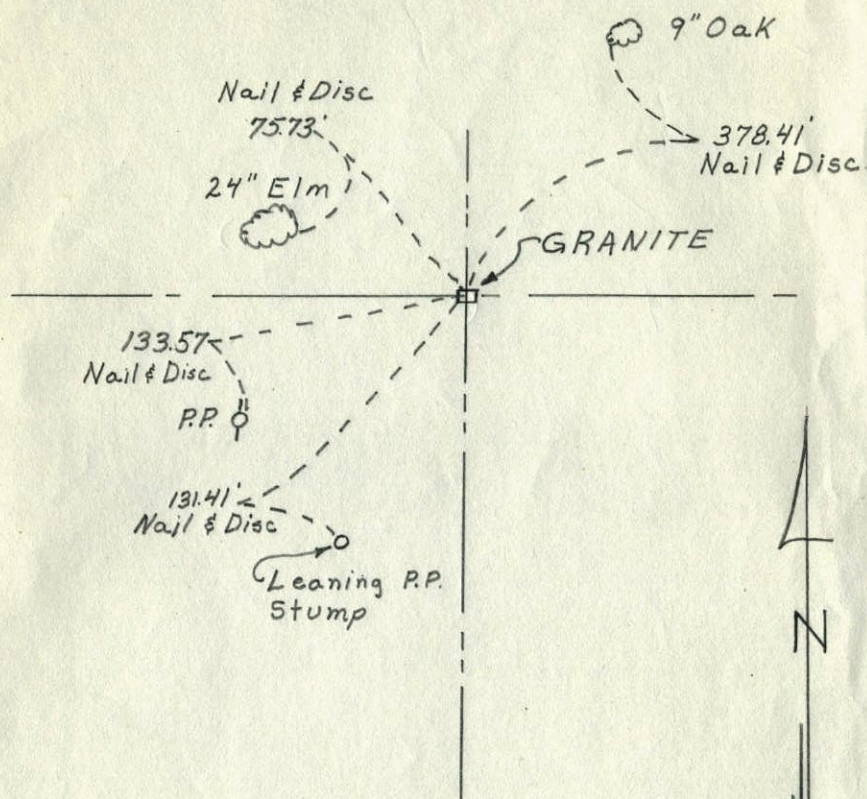
County Project Coordinates	State Plane Coordinates
Northing <u>N/A</u>	Y _____
Easting <u>N/A</u>	X _____

Date _____

June 16, 1961

N. 1/4 Cor. of Sec. 5 - T. 32 - R. 23

Granite down 1'
(iron over granite)

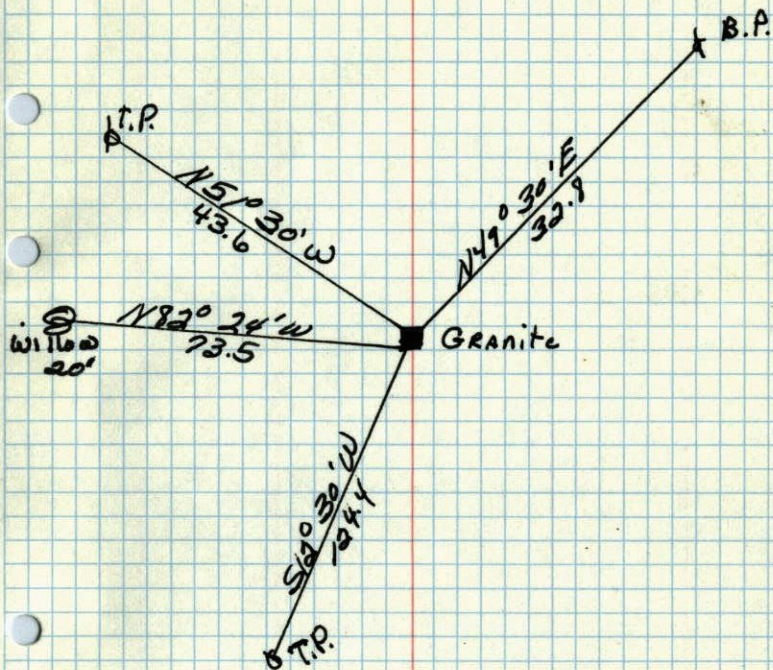


Submitted By
R.M. KNUDSEN

4 ✓

N. 1/4 Cor. of Sec. 5 T. 32 R. 23

Granite down 1'



Oct. 29, 1944
Caetwright